

FLASH™

LBM BALL MOUNT

Locking
aluminum ball mount
Use and care instructions

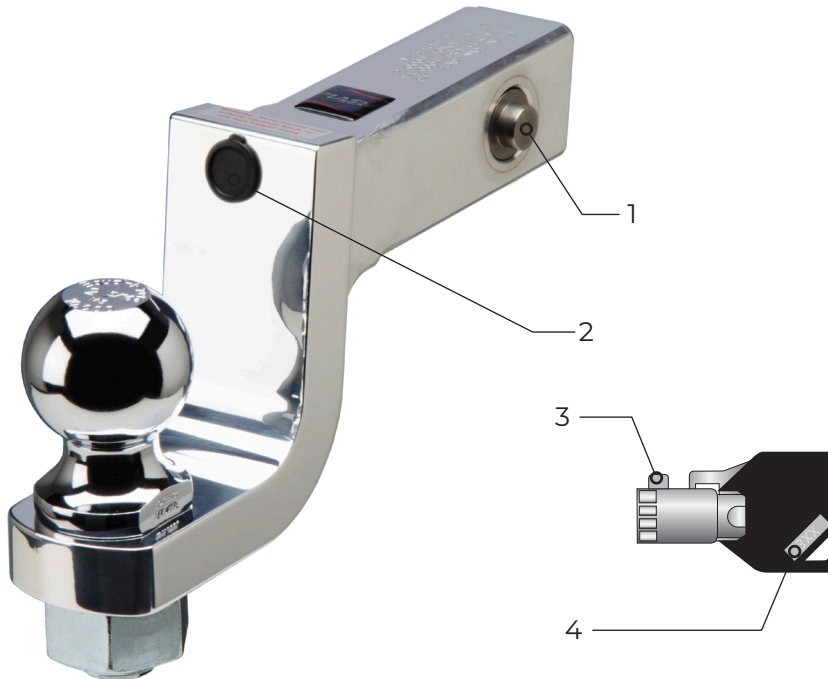
MODEL	DROP	RISE	HOLE SIZE	SHANK SIZE
DT-LBM8200	2"	1"	1"	2"
DT-LBM8400	4"	3"		
DT-LBM8600	6"	5"		
DT-LBM9200	2"	1"	1-1/4"	
DT-LBM9400	4"	3"		
DT-LBM9600	6"	5"		

MAX TRAILER WT. LB	MAX TONGUE WT. LB
10,000	1,000

Congratulations on your purchase of a new Fastway® FLASH™ locking aluminum ball mount (LBM). Read these instructions thoroughly to become familiar with proper set up and maintenance procedures. This will ensure your FLASH ball mount will give you maximum performance, and years of service.

Keep these instructions in a safe place as a reference for future information, or access them online at fastwaytrailer.com/manuals.

1. Drop bar lock pin(s)
2. Drop bar lock cylinder and cover
3. Key safety locator tab
4. Key code



Hitch ball not included

Key code:

Important: Lost keys cannot be replaced without the key code. Write it down and keep it in a safe place.

Please register your product. See warranty information on back. If you lose your keys, contact us about a replacement at 877-523-9103.

Made in the USA

Important Safety Information

Failure to follow all safety warnings may result in severe injury or death.

⚠️ WARNING

- Read, understand, and follow all safety warnings, setup, use, and maintenance instructions of your trailer, tow vehicle, and hitching equipment before installing your FLASH ball mount or towing your trailer.
- Never cut, weld, grind, bend, heat, or modify ball mount components in any way.
- It is the driver's responsibility to properly install and adjust equipment and adjust driving habits to match towing conditions. The driver is responsible for their own safety and the safety of passengers.
- Never exceed the specified weight ratings for the trailer, tow vehicle, receiver hitch, ball mount, hitch ball, or any other towing equipment.
- Always load the trailer correctly. Follow trailer and tow vehicle manufacturer's recommendations for placement and quantity of cargo. Tongue weight should be between 10% -15% of Gross Trailer Weight (GTW).
- Always use a hitch ball size that correctly matches your trailer coupler size and make sure it is coupled securely before towing.
- Do not impact the ball mount on the ground. Do not back into things with your ball mount or attached trailer (i.e. loading docks, curb and gutter, etc.). If your ball mount has been impacted in any way, thoroughly inspect it for damage before towing, and if it is bent or damaged DO NOT tow; replace it.
- Do not unlock the ball mount from the receiver while the ball mount is under load from an attached trailer.
- Check all towing hardware before each trip. Do not tow your trailer until lock pins and receiver holes have been checked for wear, visually verifying that the lock pins are completely engaged in the tow vehicle's receiver (hitch pin) holes.
- Check your keys before use to make sure they are in good working order and that the safety locator tab at the front of the key barrel is intact.
- Always use a hitch ball with the correct diameter threaded shaft to fit the hole in the ball mount.
- Always use a hitch ball with a rating that equals or exceeds the Gross Trailer Weight.

⚠️ CAUTION

- Never use the ball mount to tow a vehicle with a chain or tow strap, or as an anchor for pulling or winching.
- Always tow with a ball mount set to the correct height for the trailer being towed.
- Do not tow your trailer on excessively rough roads.
- Do not tow your trailer through profound ditches, dips, or swales.
- Replace all worn, faded, or unreadable warning stickers on the ball mount immediately.
- Insert the key firmly and completely into the lock cylinder before rotating the lock.
- Do not use the ball mount without properly checking and preparing the receiver hitch to be used.

Good things to know before first use

Write your key code down and keep it! If you know the code, lost keys are easily and cheaply replaced. If you don't, you must have the entire lock mechanism replaced to be able to use the ball mount again.

The key cannot be removed with the lock pins in the retracted position – this is a safety feature of the product. It keeps the user from removing the keys before the lock pins are fully extended. Because you can't remove the key (unless you break the key safety tab); we recommend attaching the ball mount key to your vehicle key chain.

If the key won't come out of the cylinder, don't try to force it. A key not coming free from the lock cylinder is most likely an indication that there is something keeping the locking pin(s) from fully extending or retracting. Forcing the key out when it is in the wrong position could damage the key by breaking off the safety locator tab and leave the ball mount lock pins not fully engaged into the receiver holes.

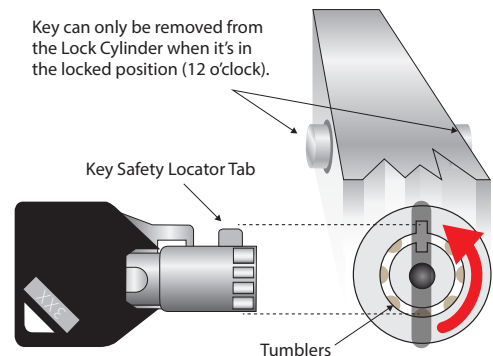
Don't pull outward on the key as you turn it or try to force the key to the 12 o'clock position. If the key does not easily turn to the straight up position, figure out what is restricting the locking pins from extending or retracting. Refer to the troubleshooting guide section of these instructions.

Don't hammer on or try to force the lock pins to retract without the key in the lock and in the process of being turned clockwise. The lock pins will not retract without the key in place and turned clockwise past the 2 o'clock position. This is a safety and security feature of the product.

Grease the hitch ball before towing with a good quality multi-purpose or bearing grease. This protects the hitch ball and the inside of your trailer coupler. The chrome coating on the ball is not covered under the ball mount warranty.

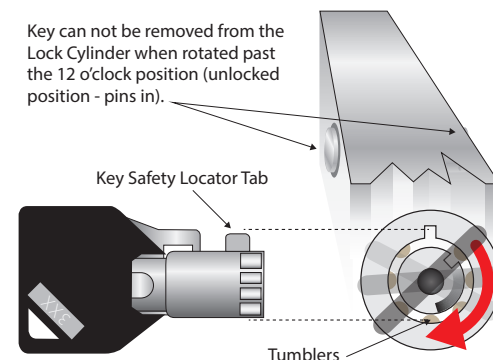
LOCKED POSITION - PINS OUT

Key can only be removed from the Lock Cylinder when it's in the locked position (12 o'clock).



UNLOCKED POSITION - PINS IN

Key can not be removed from the Lock Cylinder when rotated past the 12 o'clock position (unlocked position - pins in).



Instructions for use

INSTALL THE HITCH BALL

FLASH ball mounts come with either a 1" or 1-1/4" diameter hole for the hitch ball attachment. Install a hitch ball that has the correct diameter threaded shank to fit the hole in your ball mount. Make sure to torque the hitch ball nut to the specifications given by the hitch ball manufacturer.

FIRST-TIME INSTALLATIONS

Check each receiver hitch tube you use before inserting your FLASH ball mount into it for the first time. Check inside and outside around the hitch pin holes for drill or punch burrs, weld splatter, or corrosion (rust). Where you encounter these things, remove them with sand paper or a file and repaint the exposed metal to avoid further rust or corrosion that could build up or damage the ball mount.

Extend and retract the lock pins into the receiver's hitch pin holes several times to make sure the receiver tube does not have an issue or obstruction that may cause a future problem. If the locking pins do get stuck in the receiver hole when installing your ball mount the first time, refer to the troubleshooting section for instructions on how to free it without damage. **DO NOT FORCE THE KEY!**

LOCKING THE BALL MOUNT INTO THE RECEIVER

Use the key to retract and extend the lock pins several times to loosen them. Retract the lock pins. Insert the ball mount into the receiver. Make sure the lock pins align with the hitch pin holes in the receiver tube. Turn the key back to 12 o'clock to extend the lock pins into the hitch pin holes. Replace the lock cover tightly.

If the key movement is stiff or restricted, make sure the lock pins are correctly located (centered) on the receiver's hitch pin holes, and that there is not a burr or other obstruction in the hole(s) that is impeding the lock pins from fully extending or retracting. Each time you install the ball mount, visually make sure the lock pins are fully engaged into the hitch pin holes.

Care and maintenance

Proper attention and care to your FLASH locking ball mount will help it provide years of trouble free service.

Regularly (at least monthly) remove your ball mount from the receiver and make sure the receiver is not rusting and corroding around the ball mount or the lock pins. This is especially important in areas where salt and other chemicals are used on roadways to melt snow and ice. Remove your FLASH ball mount and store it inside the tow vehicle instead of in the receiver during winter months when it will be exposed to the sand and snow melt used on winter roads.

CLEANING - As necessary, clean around the lock pins and inside the lock cylinder. Do this by wiping away dirt and grime with a soft cloth and/or using compressed air. When cleaning the ball mount surfaces, **DO NOT** use degreasers or harsh cleaners - simple mild soap and water is best for aluminum. Make sure the caps are in place and covering the lock cylinders before washing/cleaning the aluminum. After washing, make sure the lock cylinders are clean and dry by blowing them out with compressed air. Aluminum rim cleaner and automobile wax can help maintain the polished luster of the aluminum, but don't get it into the lock cylinder or lock pins.

Keep the lock cylinder mechanism clean by keeping the lock covers over the locks. If your lock cover is lost or missing you can purchase a new one by calling our customer service department.

LUBRICATION - Under normal use, lubrication is not

required. FLASH locking ball mount mechanisms are sealed and internally lubricated with high quality grease. If necessary, you may lightly lubricate the pins and lock cylinders. Retract the locking pins and lightly grease or oil the wall of the hole. Cycle the pins, then wipe away the excess grease or oil. You may also put a small drop of lubricating oil into the lock cylinder. Wipe away any excess. Be careful not to get oil on the rubber lock covers as the oil can cause them to swell, making it harder to seat into place, and prevents them from keeping out dirt and moisture.

Troubleshooting guide

THE KEY WON'T TURN THE LOCK

Check the lock cylinder for debris. Clean the lock cylinder with compressed air and/or soap and water. Push each of the tumbler pins down with a push-pin or paper clip to make sure they move freely. Blow the cylinder dry, and lubricate with a light machine oil.

Check the receiver's hitch pin holes for a burr, dirt, or other obstruction.

Make sure you are using the correct key, and that it has not been modified or damaged.

If you are using the correct key, call our customer service department for troubleshooting assistance. Someone may have tried to steal your ball mount and damaged the internal mechanisms.

KEY TURNS SLIGHTLY, BUT LOCK PINS WON'T RETRACT – STUCK IN RECEIVER BECAUSE OF RECEIVER CORROSION, DEFORMATION OR BURR

If the pins are rusted into place (stainless lock pins don't rust, but vehicle receivers do, and the rust can shrink the size of the hitch pin hole around the stainless steel lock pins), spray penetrating oil around the pins to loosen the rust.

Have an assistant help you. Insert the key and maintain constant but not excessive pressure on the key in a clockwise direction. Use a punch and hammer to gently tap the lock pins, alternating between one pin and then the other until the pins are completely retracted. Start with a little force and increase as necessary. Always alternate taps from one side to the other - never tap just one side.

CAN'T INSERT KEY

Make sure there is not dirt or debris lodged in the lock mechanism or key. Pocket lint is the most common obstruction.

Make sure one of the keys is not damaged and missing the safety tab at the front of the barrel. If the Key Safety Locator Tab is missing, the key may have been removed from the lock cylinder with the lock turned to an incorrect position. Call Fastway customer service for assistance.

In most cases, our customer support team can walk you through the process or make suggestions for troubleshooting that can help resolve the problem and help prevent damage to your ball mount. Please do not hesitate to call us at 877-523-9103 if you encounter a problem.

Limited 1 year warranty

Do not return this product to the retailer.

For warranty claims or customer support contact Fastway Trailer Products directly weekdays 8:00 AM - 5:00 PM Mountain time at 877-523-9103 or by email at support@fastwaytrailer.com.

Fastway Trailer Products warrants the FLASH LBM ball mount, excluding chrome and corrosion, against latent defects in materials and workmanship under normal use and service, ordinary wear and tear is excepted, to the original owner for a period of 1 year from the first date of purchase at retail up to the value of its original purchase price. If this product is latently defective it will be replaced or repaired when a proper return authorization is obtained and the product is returned with transportation charges prepaid to Fastway Trailer Products.

Fastway Trailer Products shall not be required to replace or repair any products damaged as a result of improper installation, alteration, unreasonable use, or improper maintenance including, without limitation, loading the product beyond the factory rated load capacity.


This warranty does not include labor charges nor does it include transportation charges for returning the product to the consumer. To the extent allowed by law, Fastway Trailer Products shall not be liable for any incidental, consequential, or any other damages including, without limitation, breach of any implied warranty, merchantability, or fitness for a particular purpose of any Fastway product. In no event shall Fastway Trailer Products be liable for any damages other than the replacement or repair of the affected part. Authorization and warranty procedure may be obtained by calling Fastway Trailer Products customer support at 877-523-9103.

Visit our YouTube channel for a detailed video of the FLASH LBM ball mount.

 youtube.com/fastwaytrailer

 facebook.com/fastwaytrailer

 twitter.com/fastwaytrailer

 google.com/+fastwaytrailerproducts

Great products make towing faster and easier. Get more info at fastwaytrailer.com.

ZIP[™]
BREAKAWAY
CABLE



Protect your fingers from loose sharp wire, and provide a safer and more effective connection to your trailer.

FLIP[™]
AUTOMATIC
JACK FOOT



Save time and effort by extending your trailer jack by six inches, eliminating fifty cranks both up and down.

ONESTEP[™]
STABILIZING WHEEL CHOCK



Virtually eliminates unwanted wheel movement providing the most stability for your trailer.

CHAIN UP[™]



The fastest and easiest way to keep your safety chains from dragging.